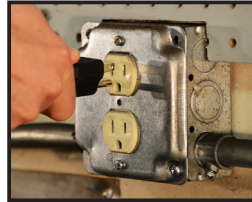


WARNING: To prevent serious injury, read manual warnings and instructions before use.

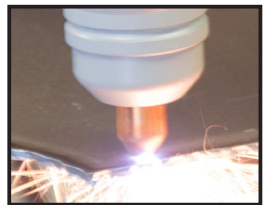
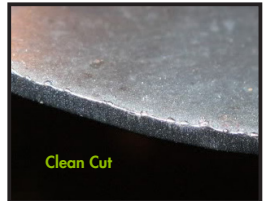
700 P PLASMA CUTTING QUICK START GUIDE

- 1 Use dedicated electrical circuit and quality compressor with moisture and dirt filter.
(Compressor performance can directly affect plasma cutting performance).
- 2 Use a piece of scrap sheet metal and perform a test cut.
- 3 Make sure your tip stays in contact with the workpiece.
- 4 Replace electrode or tip when damaged or if they show excessive wear.



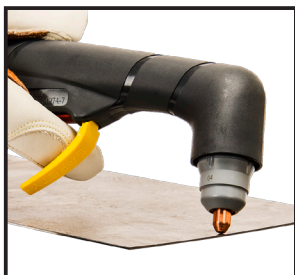
Optimal
Pressure = 65 PSI

Optimal
Flow = 3.5 cu. ft./min.



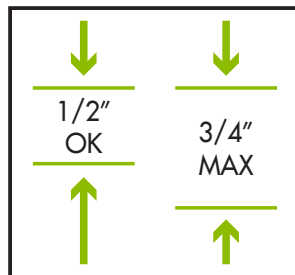
CUTTING TIPS

CONTACT CUTTING



- Drag torch while holding at a 15-30° angle

CUTTING CAPABILITY



- Stay within cutting limits of the machine

CUTTING GUIDE



- Use a metal straight edge to control cuts

REMOVE MOISTURE



- Built in moisture trap extends tip life, and needs to be drained periodically

WARNING: To prevent fire and serious injury: Keep torch and wire clear of grounded objects while welder is plugged in. Be sure to follow safe welding procedures and wear proper PPE (clothes, welding helmet, safety glasses, welding gloves, boots, etc.)