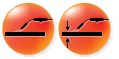


Forney® 140 MIGx WELDER



ITEM# 363 SPECS	APPLICATIONS: DIY Farm & Ranch Maintenance & Repair Hobby & Art Light Industrial Contractor	PROCESSES: MIG (GMAW) TruSet™ MIG Flux-Cored Welding (FCAW) TruSet™ Flux-Cored	INPUT VOLTAGE: 120V/50-60Hz Single phase	OUTPUT VOLTAGE RANGE: 13V-20V	RATED DUTY CYCLE: 30% @ 90A	WEIGHT: 20.3 lbs. (9,2 kg)	DIMENSIONS: L: 18.4" (466,mm) W: 8.3" (211mm) H: 13.7" (349mm)
			INPUT CURRENT: 12.7A	MAX OUTPUT AMPS: 140A			



ITEM# 363

INCLUDES:

- ITEM# 363 Forney® 140 MIGx Welder with 7' Power Cord
- Ground Clamp with 8' Copper Cable
- Integrated 8' MIG Gun
- Gas Regulator and 6' Hose
- 15-20A Plug Adapter
- Nylon Carry Strap
- 0.030" Contact Tip
- 0.035" Contact Tip
- 0.030"/0.035" V Drive-Roll in Box
- Installed 0.030"/0.035" K Drive-Roll

Welding Powerhouse: This powerful inverter machine delivers high amperage and extended duty cycles, ensuring you can work longer without interruptions

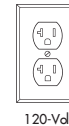
Simple Operation: Equipped with a precise and straightforward two-knob interface that provides a practical, no-nonsense user experience

TruSet™ MIG and Flux-Core Technology: Synergic function provides optimal settings based on your material, wire diameter and gas type for fast and easy setup

Intuitive LED Display: Make adjustments and monitor precise welding parameters with a bright display and large digits for optimum visibility

Portable: Features a lightweight design, robust handle/cord wrap and a nylon carrying strap so you can easily and comfortably take your welder wherever you need

Expert-Tech® Service: Our Colorado-based welding technicians are here to keep you and your machine working, ultimately saving you time and money. Call us at 1-800-521-6038 with any questions



120-Volt

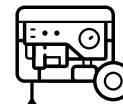
Voltage:

Operates on 120V input power

1/4"

Weld Capacity:

24 ga - 1/4"



Generator Requirements:

4,000W continuous output
No low-idle, less than 5% THD



Integrated MIG Gun:

Ensures optimal electrical conductivity to deliver maximum power to the weld

CSA Certified: Our products are CSA certified to meet strict safety and performance standards, ensuring reliability and your safety in any work environment.

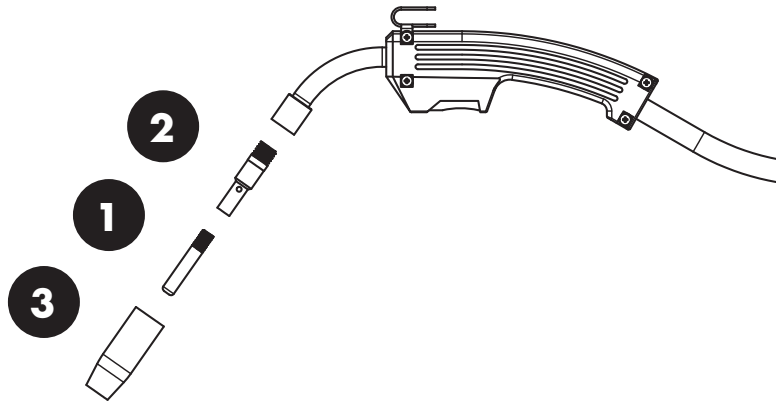


2057 VERMONT DRIVE, FORT COLLINS, COLORADO 80525
1-800-521-6038 • FORNEYIND.COM

ITEM# 363 SPECS CONTINUED				
Generator Requirements	MIG Shielding Gas Connection	Spool Size Capacity	Wire-Feed Speed Range	Wire Diameter Range
4,000W continuous output, no low-idle, 5% THD max	5/8-18 RH Thread	4" and 8" only	80-200 IPM	0.024"-0.035"

CONSUMABLES:

NO.	PART NUMBER	ITEM DESCRIPTION	NO.	PART NUMBER	ITEM DESCRIPTION
1	60170	Tip (Tweco® 11-24)	2	85793	Diffuser
	60171	Tip (Tweco® 11-30)	3	85336	Nozzle (Tweco® 21-50)
	60172	Tip (Tweco® 11-35)		85337	Nozzle (Tweco® 21-62)



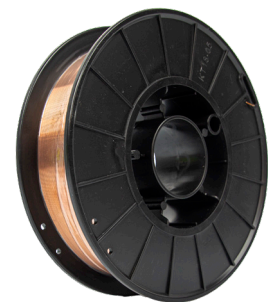
RECOMMENDED ACCESSORIES:



ITEM# 55857
Forney Black Matte Auto-Darkening Filter (ADF) Welding Helmet



ITEM# 53425
Black Leather Welding Gloves (Men's L)



ITEM# 42286
ER70S-6, MIG Welding Wire, Mild Steel, .030 in Diameter x 10 Pound Spool

Distributed by: