

UNDERSTANDING DISPLAY		
LED Display Status	Explanation	Additional Indicators
	Overheat protection. Allow the unit to cool before continuing use.	
	Low temperature protection. Environment is too cold to use unit.	
	Connected battery is the incorrect voltage. Ensure the unit is attached to a 12V battery.	
	Clamps are reversed. Ensure red clamp is attached to positive (POS, P, +) battery post, and black is attached to negative (NEG, N, -) battery post.	
	Smart Jump Start has failed. Ensure clamps are not shorted and attempt to use Force Jump Start.	
	Temperature Sensor failure. Power cycle the unit. If this does not clear the fault, contact Forney Industries.	
	Front-end communication failure. Power cycle the unit. If this does not clear the fault, contact Forney Industries.	
	DC chip communication failure. Power cycle the unit. If this does not clear the fault, contact Forney Industries.	
	Start switch failure. Power cycle the unit. If this does not clear the fault, contact Forney Industries.	

ITEM# 917 Frontline™ 1750		
Process	Jump Start USB-A/USB-C Power Supply Flashlight	
Battery Type <i>Battery chemistry charged by each mode.</i>	STD	Wet Cell, Enhanced Flooded, Maintenance Free, Deep Cycle, Calcium
	AGM	Absorbed Glass Mat (VRLA)
	GEL	Gel Cell (VRLA)
Peak Jump Start Output	1750A	
Internal Battery Capacity	51.8Wh	
USB-C Input Power	Up to 30W (PD30W)	
Charging Time	Less than 2 hours (when using a 30W charger)	
Jump Start Battery Voltage	12V	
Recommended Engine Size	Gasoline up to 7.5L Diesel up to 5.0L	
USB-A Output	5V/3A, 9V/2A, 12V/1.5A (QC3.0 18W)	
USB-C Output	5V/3A, 9V/3A, 12V/2.5A, 15V/2A, 20V/1.5A (PD30W)	
LED Flashlight Brightness	300 Lumens	
Flashlight Modes	Solid White – Solid Red – Flashing Red	
Dimensions	8.3" x 4.2" x 2.3" (212mm x 106mm x 58mm)	



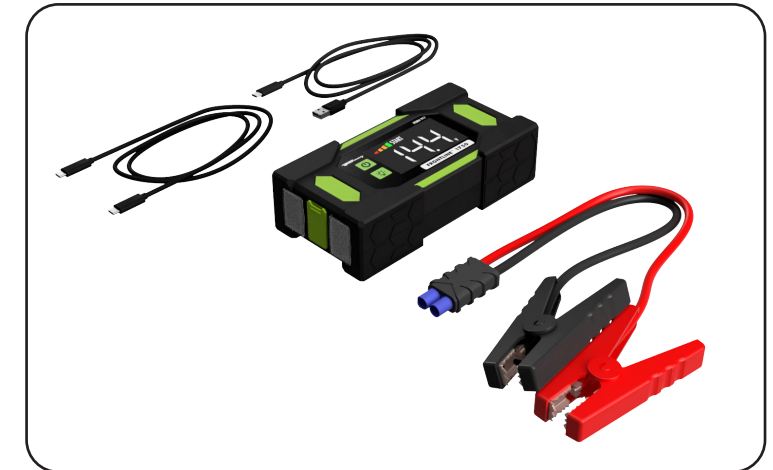
IP65 UN38.3
FC RoHS



Forney Industries, Inc.
2057 Vermont Drive
Fort Collins, CO 80525
+1-800-521-6038
www.forneyind.com



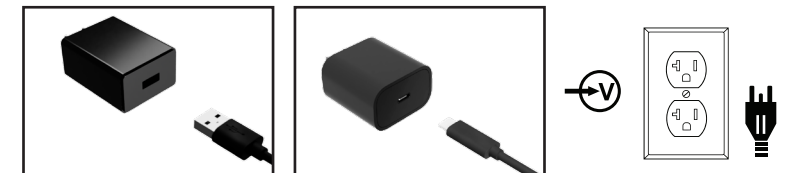
FRONTLINE™ 1750 1750A LITHIUM JUMP STARTER QUICK START GUIDE



Charging

The Frontline™ 1750 comes partially charged out of the box and should be fully charged prior to use.

1. Connect to any powered USB port



Charging block not included.

2. Connect USB-C cord to unit



Unit will begin charging.

Charge time is based on the output of the power source. For fastest charging use a 30W charging block.

Smart Jump Start

USE THIS MODE WITH EXTREME CARE. THIS MODE IS FOR 12-VOLT LEAD-ACID BATTERIES ONLY (includes AGM, GEL, flooded, etc).

Please make sure all electrical systems in vehicle are turned off before attempting to Jump Start (headlights, air conditioner, radio, etc).

1. Connect clamp cable to 12V START OUT port on jump starter unit



2. Connect clamps to battery terminals



Black to the negative (NEG, N, or -) terminal



Red to the positive (POS, P, or +) terminal

3. Power on the unit



Press the Power Button when connected to the battery to begin jump starting.

"START" icon will illuminate and output will begin automatically if you are properly connected to a healthy battery.

4. Start the vehicle

5. Power off the unit



Hold Power Button for 3 seconds to power off unit.

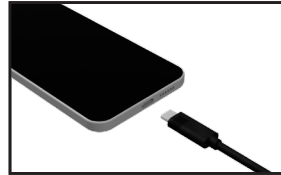
Force Jump Start mode The unit is designed to jump start 12-volt lead-acid batteries with as little as 1V charge remaining. If your battery is below 1-volt you can jump start using Force Jump Start, a manual override feature which turns on the Jump Start function. (Read warnings under Force Jump Start.)

Power Source (Charging Personal Devices)

1. Power on the unit. Plug personal device charging cord into any port marked USB OUT



2. Plug charging cord into device to be charged



Hold Power Button for 3 seconds to power off unit.

Force Jump Start

USE THIS MODE WITH EXTREME CARE. THIS MODE IS FOR 12-VOLT LEAD-ACID BATTERIES ONLY (includes AGM, GEL, flooded, etc).

BOTH THE SPARK PREVENTION AND REVERSE POLARITY PROTECTION FEATURES WILL BE DISABLED. PAY VERY CLOSE ATTENTION TO THE POLARITY OF THE BATTERY BEFORE USING THIS MODE. DO NOT ALLOW THE POSITIVE AND NEGATIVE BATTERY CLAMPS TO TOUCH OR CONNECT TO EACH OTHER AS THE PRODUCT WILL GENERATE SPARKS. THIS MODE USES VERY HIGH CURRENT (UP TO 1750 AMPS) THAT CAN CAUSE SPARKS AND HIGH HEAT IF NOT USED PROPERLY. IF YOU ARE UNSURE ABOUT USING THIS MODE, DO NOT ATTEMPT AND SEEK PROFESSIONAL HELP.

1. Connect clamp cable to 12V START OUT port on Jump Starter unit



2. Connect red positive clamp to battery



Red to the positive (POS, P, or +) terminal

3. Power on the unit

4. Enable Force Jump Start mode



To begin Force Jump Start mode, press and hold both the Power Button AND Flashlight Button for 5 seconds.

Rapid stair-step flashing of the color light bar and solid "Start" icon indicates you're in Force Jump Start mode.

5. Connect black negative clamp to battery



Black to the negative (NEG, N, or -) terminal

6. Start the vehicle

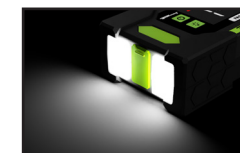
7. Power off the unit



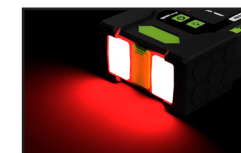
Hold Power Button for 3 seconds to power off unit.

Flashlight

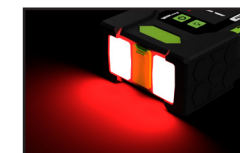
Cycle through Flashlight modes using Flashlight Button. Each click of the button will change the Flashlight to the next mode, or starting with the Flashlight off, follow the steps below to navigate to each mode. Unit will cycle from Flashing Red light to off.



Solid White
Press Flashlight Button 1X



Solid Red
Press Flashlight Button 2X



Flashing Red
Press Flashlight Button 3X